

## **Agenda:**

**5/10/2026 (6th Sunday of Easter – Year A)**

**Entrance:** On This Day, O Beautiful Mother (A) (M #222)

**Gloria:** Glory to God (Mass of St. Joseph) (Bb)

**Responsorial Psalm:** Response (6th Sunday of Easter) (D)

**Gospel Acclamation:** Gospel Acclamation (6th Sunday of Easter) (D)

**Offertory:** Holy Ground (Bb) (BB #133)

**Holy, Holy:** Holy, Holy (Mass of St. Joseph) (Bb)

**Memorial Acclamation:** Save Us, Savior (Bb)

**Amen:** Amen (Heritage Mass) (Bb)

**Lamb of God:** Lamb of God (Mass of St. Joseph) (Bb)

**Communion:** Hail Mary: Gentle Woman (A) (M #147)

**Communion:** You Are Near (D) (BB #115)

**Communion:** Anima Christi (Ab) (Sheet)

**Recessional:** Let the Fire Fall (Gm) (Sheet)

# On This Day, O Beautiful Mother

Louis Lambillotte

## REFRAIN

A D A

On this day, O beau - ti - ful Moth - er, On this

6 E A

day we give thee our love. Near thee, Ma - don - na,

11 D A E A *Fine*

fond - ly we hov - er, Trust - ing thy gen - tle care to prove.

## VERSES

17 D A D

1. On this day we ask to share, Dear - est  
2. Queen of an - gels, deign to hear Hum - ble

22 Bm A D

1. Moth - er, thy sweet care; Aid us ere our  
2. chil - dren's ten - der prayer; Young hearts gain, O

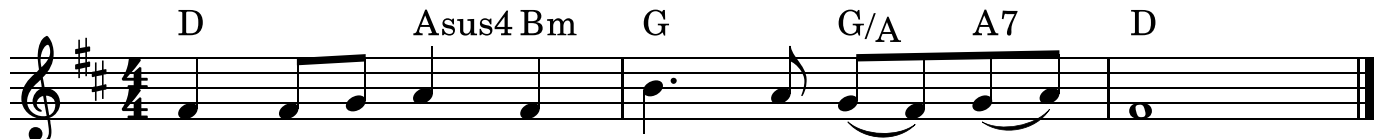
27 F#m E E7 A D F#m E E7 *D.C.*

1. feet a - stray Wan - der from thy guid - ing way.  
2. Vir - gin pure, Je - sus' love for them as - sure.

# Sixth Sunday of Easter

Year A Psalm 66:1-3, 4-5, 6-7, 16, 20

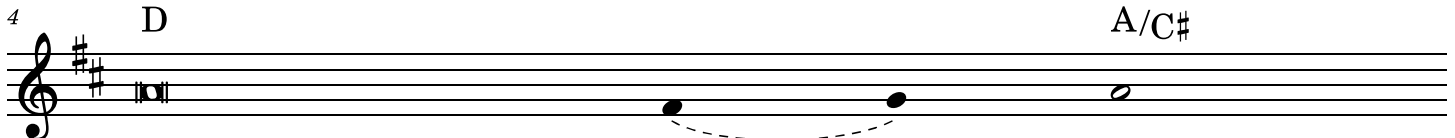
## RESPONSE



Musical notation for the Response in G major, 4/4 time. The melody is: D4 (quarter), E4 (quarter), F#4 (quarter), G4 (quarter), A4 (quarter), B4 (quarter), C5 (quarter), B4 (quarter), A4 (quarter), G4 (quarter), F#4 (quarter), E4 (quarter), D4 (half). Chords above the staff are: D (over D), Asus4 Bm (over E), G (over G), G/A (over A), A7 (over A), and D (over D).

Let all the earth cry out to God with joy.

## VERSES




Musical notation for Verse 1 in G major, 4/4 time. The melody is: D4 (quarter), E4 (quarter), F#4 (quarter), G4 (quarter), A4 (quarter), B4 (quarter), C5 (quarter), B4 (quarter), A4 (quarter), G4 (quarter), F#4 (quarter), E4 (quarter), D4 (half). Chords above the staff are: D (over D) and A/C# (over A).

1. Shout joyfully to God, all the earth,  
Proclaim his glo - rious praise.

2. "Let all on earth worship and sing praise to you,  
Come and see the works of God,

3. He has changed the sea into dry land;  
Therefore let us re - joice in him.

4. Hear now, all you who fear God,  
Blessed be God who re - fused me not



Musical notation for Verse 2 in G major, 4/4 time. The melody is: D4 (quarter), E4 (quarter), F#4 (quarter), G4 (quarter), A4 (quarter), B4 (quarter), C5 (quarter), B4 (quarter), A4 (quarter), G4 (quarter), F#4 (quarter), E4 (quarter), D4 (half). Chords above the staff are: G/B (over G) and A (over A).

1. Sing praise to the glory of his name;  
Say to God, "How tremendous are your deeds!"

2. Sing praise to your name!"  
His tremendous deeds among the chil-dren of Adam.

3. Through the river they passed on foot;  
He rules by his might for - ever.

4. While I declare what he has done for me.  
My prayer or his kindness!

# Gospel Acclamation

Year A - Sixth Sunday of Easter

## ACCLAMATION: (No. VI)

D G Asus4 A7 D

Al - le - lu - ia, al - le - lu - ia, al - le - lu - ia.

## VERSE: (Cantor)

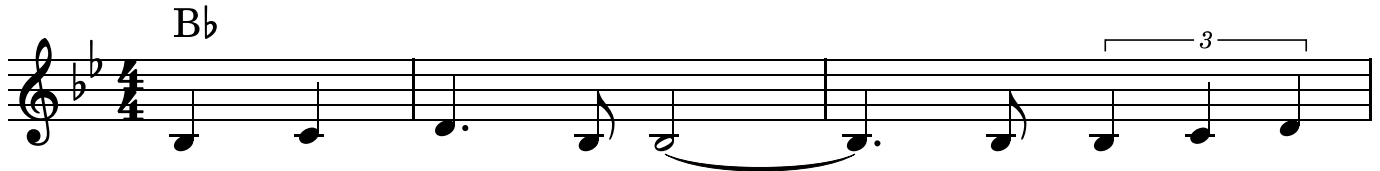
5 D F#m Bm D A

Who - ev - er loves me will keep my word, says the Lord,

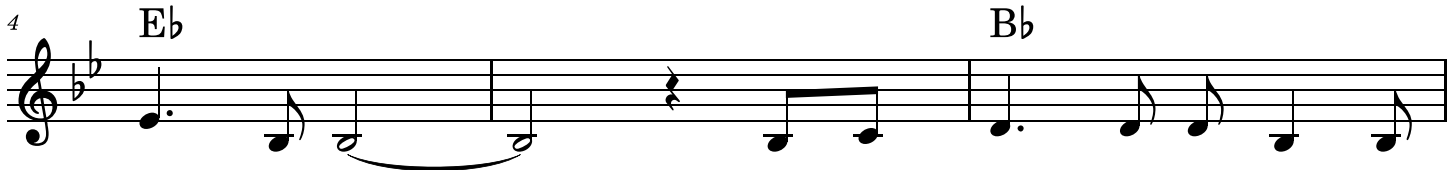
8 G Em F#m Bm F#m Em D

and my Fa - ther will love him — and we will come to him.

# Holy Ground



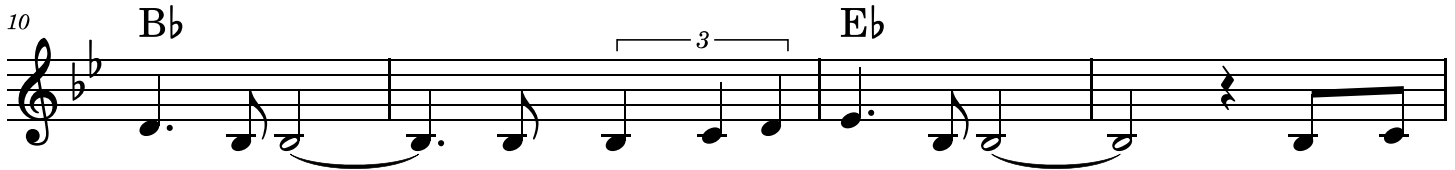
1. This is Ho - ly ground;\_\_\_\_\_ We're stand - ing on  
 2. These are Ho - ly hands;\_\_\_\_\_ He's giv - en us  
 3. These are Ho - ly lips;\_\_\_\_\_ He's giv - en us



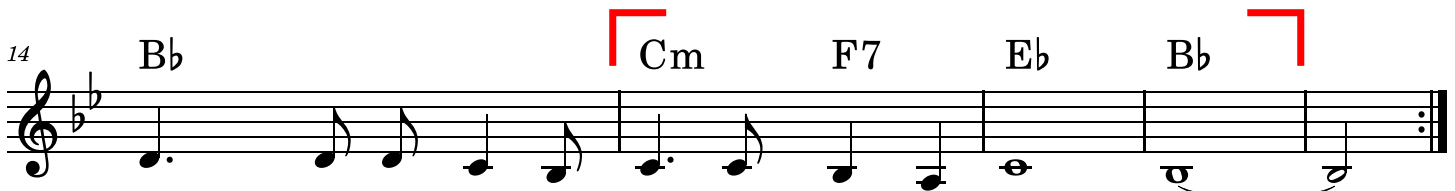
1. Ho - ly ground,\_\_\_\_\_ For the Lord is pre - sent and  
 2. Ho - ly hands.\_\_\_\_\_ He works through these hands and  
 3. Ho - ly lips.\_\_\_\_\_ He speaks through these lips\_\_ and



1. where He is, is Ho - ly.\_\_\_\_\_ This is  
 2. so these hands are Ho - ly.\_\_\_\_\_ These are  
 3. so these lips are Ho - ly.\_\_\_\_\_ These are



1. Ho - ly ground;\_ We're stand - ing on Ho - ly ground,\_ For the  
 2. Ho - ly hands;\_ He's giv - en us Ho - ly hands.\_ He works  
 3. Ho - ly lips;\_\_\_\_\_ He's giv - en us Ho - ly lips.\_\_\_\_\_ He speaks



1. Lord is pre - sent and where He is is Ho - ly.  
 2. through these hands and so these hands are Ho - ly.  
 3. through these lips\_\_ and so these lips are Ho - ly.

# Hail Mary: Gentle Woman

INTRO: Cantor

Musical score for the Intro of 'Hail Mary: Gentle Woman'. The score is written in treble clef, key of D major (two sharps), and 6/8 time. It consists of five staves of music. The lyrics are: Hail Ma - ry, full of grace, the Lord is with you. Bless - ed are you a - mong wom - en and blest is the fruit of your womb, Je - sus. Ho - ly Ma - ry, Moth - er of God, pray for us sin - ners now and at the hour of death. A - men.

Chords: A, D, A, D, A, G, D, A, D, A, D, A, G, D, A

§ REFRAIN: All

Musical score for the Refrain of 'Hail Mary: Gentle Woman'. The score is written in treble clef, key of D major (two sharps), and 6/8 time. It consists of two staves of music. The lyrics are: Gen - tle wom - an, qui - et light, morn - ing star, so strong and bright, gen - tle Moth - er, peace - ful dove,

Chords: A, D, A, E, A, D, A

42 1., 2. *to* **Final**  
*Verses* *Fine*

— teach us wis-dom; — teach us love. —

**VERSE 1: All**

48 D A E

You were cho-sen — by the Fa-ther; — you were cho-sen —

54 A D A

— for the Son. — You were cho-sen — from all wom-en —

60 B E E7 *D.S.*

— and for wom-an, — shin-ing one. —

**VERSE 2: All**

65 D A E

Bless-ed are you — a-mong wom-en, — blest in turn —

71 A D A

— all wom-en, too. — Bless-ed they — with peace-ful spir-its. —

77 B E E7 *D.S.*

— Bless-ed they — with gen-tle hearts. —

# You Are Near

Daniel L. Schutte

## REFRAIN *Peacefully* (♩ = ca.80)

Yah - weh, I know you are near, \_\_\_\_\_ standing

al - ways at my side. \_\_\_\_\_ You guard me from the

foe, and you lead me in ways ev - er - last-ing. \_\_\_\_\_ *Fine*

## VERSES

1. Lord, you have searched my heart, and you know when I  
 2. Where can I run from your love? If I climb to the  
 3. You know my heart and its ways, you who formed me be -  
 4. Mar-vel - ous to me are your works; how pro - found are your

1. sit and when I stand. Your hand is up - on me, pro -  
 2. heav-ens you are there; if I fly to the sun - rise or  
 3. fore I was born, in the se - cret of dark-ness be -  
 4. thoughts, my Lord. E - ven if I could count them, they

-1. tect-ing me from death, keep-ing me from harm. \_\_\_\_\_  
 2. sail be-yond the sea, still I'd find you there. \_\_\_\_\_  
 3. fore I saw the sun, in my moth-er's womb. \_\_\_\_\_  
 4. num-ber as the stars, you would still be there. \_\_\_\_\_

# Anima Christi

Donna Cori Gibson

Ab Absus4 Ab Fm Ebsus4 Eb

5 Ab Absus4 Ab Ab/G Fm Eb Ab

Soul of

9 Ab Absus4 Ab Fm

Christ, Sanct - i - fy me. Bo - dy of Christ,

12 Ebsus4 Eb Ab Absus4 Ab Ab/G

save me. Blood of Christ, in - e - bri - ate me. Wa - ter

15 Fm Eb Ab Ab

from the side of Christ, wa - sh me. Pas - sion of Christ,

18 Absus4 Ab Ab/G Fm Ebsus4 Eb Eb/G

strength - en me. O, good Je - sus, hear me. With - in your

21 Fm Db Ebsus4 Eb

wounds, O Lord, hide me. Se - pa - ra - ted from you, let me - ver

24 Ab Ab/G Fm Ab Eb Eb Ab

be. From the e - vil one, pro - tect me. At the

27 Fm Ab Ab/C Db Eb

ho - ur of my death, call me. Je - sus, call me. Close to

30 Ab Absus4 Ab Ab/G Fm

you, Je - sus, bid me, that with all the saints, I may

33 Eb Fm Fm/Eb Db

praise Thee. Praise you for e - ver \_\_\_\_\_ and\_ for e - ver \_\_\_\_\_ praise you, for

36 Ebsus4 Eb Ab Ebsus4 Eb Ab

e - ver, \_\_\_\_\_ a - men. Praise you for e - ver, \_\_\_\_\_ a - men.

# Let the Fire Fall

George Misulia

## INTRO

Gm Gm Gm Gm

5 NC Gm NC Gm Cm Gm

*mp*

(Cantor)

Ho-ly Spir - it,

(All)

Ho-ly Spir - it,

(Cantor)

1. Come\_\_ with Your fire.
2. Pu - ri - fy my heart.
3. Set my life on fire.

9 NC Gm NC Gm Cm Gm

(Cantor)

Ho-ly Spir - it,

(All)

Ho-ly Spir - it,

(Cantor)

1. Come\_\_ with your fire.
2. Pu - ri - fy my heart.
3. Set my life on fire.

13 Cm Gm

(All)

1. Ho-ly Spir - it, come\_\_ with Your fire.\_\_\_\_\_
2. Ho-ly Spir - it, pu - ri - fy my heart.\_\_\_\_\_
3. Ho-ly Spir - it, set my life on fire.\_\_\_\_\_

17 Cm D

*cresc.*

1. Ho-ly Spir - it, come\_\_ with Your fire.\_\_\_\_\_
2. Ho-ly Spir - it, pu - ri - fy my heart.\_\_\_\_\_
3. Ho-ly Spir - it, set my life on fire.\_\_\_\_\_

21 Eb F Gm Eb F Gm

*f grad. accel.*

Come, Ho - ly Spir - it, let the fire fall.

25 Eb F Gm Eb F Gm



Come, Ho - ly Spir - it, let the fire fall.

29 Eb F Gm Eb F

|        |
|--------|
| 1., 2. |
| Gm     |

|    |
|----|
| 3. |
| G  |



Let the fire fall. Let the fire fall. fall.

*a tempo*